

CARMO *electronics*

Ignition & Injection Systems

GO KARTS

MINIBIKES

MOTORBIKES
QUADS
TRIKES

"LEADING IN MOTOR ELECTRONICS"

***Advanced Fuel & Ignition Systems**

***Digital Replacement Igniters**

***Repairment Ignitions and Injection Systems**

***High Quality Generators and Regulators**

Inleiding (Dutch Introduction)	3
Introduction (Engelse Inleiding)	6
Productlijst / Productlist	9
• Motorbikes	9
• Off-Road Quad Bikes	26
• Motorcross & Enduro Bikes	27
• Extra	30
• Size & Additional Information About Generators	30
Voorwaarden & Bepalingen (Terms & Conditions)	31

TOONAANGEVEND IN MOTORELEKTRONICA

DE ORGANISATIE

Carmo electronics is een innovatief bedrijf dat actief is op het gebied van motorelektronica. Sinds de oprichting in 1994 heeft Carmo electronics zich gespecialiseerd in het testen en repareren van ontstekingsunits voor motorfietsen. Daarnaast houdt Carmo electronics zich bezig met de ontwikkeling van digitale ontstekings- en injectiesystemen van alle soorten verbrandingsmotoren. Carmo electronics kan door haar expertise en flexibele organisatiestructuur uitstekend inspelen op de wensen van haar klanten.

BETROUWBARE PARTNER

De jarenlange ervaring en specialistische kennis die Carmo electronics heeft opgebouwd, staan garant voor een betrouwbare partner in motorelektronica. Inmiddels maakt een grote klantenkring in heel Nederland en Europa gebruik van de uiteenlopende producten en diensten. Een eigen afdeling Research & Development maakt het mogelijk in te spelen op de razendsnelle ontwikkelingen op motorgebied. Carmo electronics kan hierdoor nieuwe technologieën testen en innovatieve producten ontwikkelen voor zowel de consumenten- als professionele markt.

PRODUCTEN EN DIENSTVERLENING

De producten en dienstverlening van Carmo electronics richten zich op de motorelektronica van alle voertuigen met een verbrandingsmotor. Naast motorfietsen moet u hierbij denken aan: jetski's, powerboats, trikes, quads, go-karts en minibikes. Carmo electronics heeft haar dienstverlening als volgt gecategoriseerd:

1. Testen en reparatie ontstekingsystemen motorfietsen
2. Universele vervangingsunit motorfietsen
3. Programmeerbare ontstekings- en injectiesystemen motorsport
4. Aanverwante elektronica producten verbrandingsmotoren

Ad 1. Testen en reparatie ontstekingsystemen motorfietsen

Bij klachten over uw motorfiets, die te maken kunnen hebben met het ontstekingsstelsel, raadt Carmo electronics aan een test te laten uitvoeren. Bij het testen van het ontstekingsstelsel worden de testresultaten op verschillende onderdelen in kaart gebracht, zoals: duur, temperatuur, trillingen, vocht, belasting en toerental. De testresultaten worden overzichtelijk getoond door een meegeleverde grafiek. Naast het ontstekingsstelsel kunnen ook andere elektronica systemen van een motorfiets aan een betrouwbare test onderworpen worden, zoals: het injectiesysteem, de dynamo en spanningsregelaar. Bij een defect ontstekingsstelsel wordt eerst contact opgenomen met de klant voordat tot reparatie wordt overgegaan.

Gegarandeerd betrouwbare reparatie

Carmo electronics kan een defect ontstekingsstelsel van nagenoeg alle motorfietsen in eigen huis zeer nauwkeurig repareren.

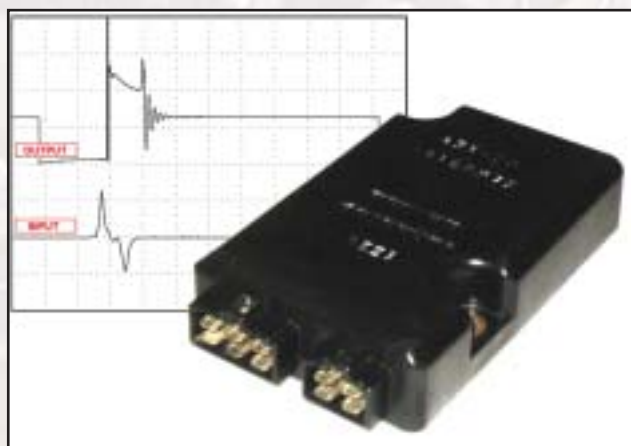
Hiervoor hoeft u slechts de ontstekingsunit op te sturen. Carmo electronics heeft een uniek simulatieprotocol ontworpen waarmee alle signalen nagebootst kunnen worden van uw merk motorfiets. Alle reparaties worden uitgevoerd met hoogwaardige onderdelen, waardoor de betrouwbaarheid gegarandeerd is. De gerepareerde units worden afgewerkt met een uiterst sterke coating, die de unit beschermt tegen de meest extreme weersinvloeden. Lever altijd een duidelijke klachtenomschrijving mee bij het opsturen van het ontstekingsstelsel. Alleen dan kan Carmo electronics u garanderen dat testen, reparatie en retour zenden van de unit binnen 3 werkdagen plaatsvindt.

Voordelen

Het grote voordeel van reparatie ten opzichte van aankoop van een nieuwe ontstekingsunit is, dat uit de test blijkt wat de oorzaak van het defect is. Zelfs als het defect niet in de ontstekingsunit zelf zit, maar elders in het elektronicasysteem. Bij reparatie wordt deze informatie gratis meegeleverd. Zo kunt u tijdig de defecte onderdelen (laten) vervangen, zodat het opnieuw defect gaan van de ontstekingsunit is uitgesloten. Dit bespaart u veel tijd en onnodige kosten.

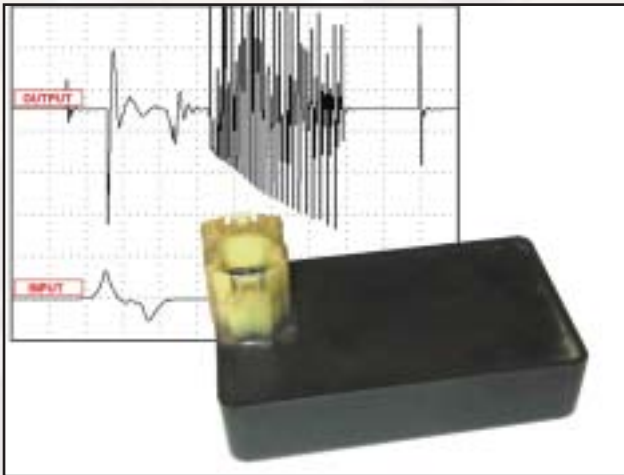
Carmo electronics kan het ontstekingsstelsel van nagenoeg alle merken motorfietsen repareren, inclusief de zogenaamde zacht ingegoten units. Hard ingegoten units kunnen getest worden, maar niet gerepareerd. De mate van hardheid kunt u beoordelen door het ingegoten deel met uw nagel in te drukken. Indien u met uw nagel een afdruk kunt maken, heeft u te maken met een zacht ingegoten unit. Kijkt u in de Productlijst achter in de brochure of reparatie mogelijk is.

Voorbeelden motormerken met typische klachten bij een kapotte ontstekingsunit:



Voorbeeld 1. Yamaha Virago: startproblemen, minder vermogen en uitvallen 1 of meerdere cilinders.

INNOVATIE ALS BASIS VOOR MOTORPRESTATIES



Voorbeeld 2. Honda XL 600V: Inhouden tijdens rit en stotteren bij slecht wegdek.

Ad 2. Universele vervangingsunit motorfietsen

In uitzonderlijke gevallen kan Carmo electronics geen betrouwbare reparatie van de ontstekingsunit uitvoeren. Bijvoorbeeld bij onherstelbare schade aan de printplaat, het hart van het ontstekingsstelsel. De universele vervangingsunit van Carmo electronics biedt dan uitkomst. Carmo electronics heeft in eigen beheer een universele, digitale ontstekingsunit ontwikkeld die door de SMD-technologie klein in afmeting is en daardoor geschikt voor bijna alle merken motorfietsen. De printplaat van deze vervangingsunit is ontwikkeld volgens de modernste technieken en voldoet aan de hoogste eisen van betrouwbaarheid en nauwkeurigheid. Hierdoor levert de vervangingsunit optimale prestaties en is de unit volledig bestand tegen trillingen en zware belastingen. De vervangingsunit is afgewerkt met een uiterst sterke coating voor een optimale bescherming tegen de meest extreme weersinvloeden. Carmo electronics kan een universele vervangingsunit voor uw motorfiets leveren binnen 3 werkdagen.

Voordelen

Een groot voordeel van de Carmo electronics vervangingsunit is, dat uit de test blijkt wat de oorzaak van het defect is. Zelfs als het defect niet in de ontstekingsunit zelf zit, maar elders in het elektronicasysteem. Dit in tegenstelling tot een nieuwe ontstekingsunit. Carmo electronics levert deze waardevolle informatie bij elke reparatie gratis mee. Zo kunt u tijdig de defecte onderdelen (laten) vervangen, zodat het opnieuw defect gaan van de ontstekingsunit is uitgesloten. Dit bespaart u veel tijd en onnodige kosten. Een ander voordeel is dat Carmo electronics standaard acceleratiedetectie in haar vervangingsunits heeft geprogrammeerd. Hierdoor zal uw motorfiets aanzienlijk beter accelereren, ook bij lagere toeren.

U vindt achter in deze brochure een Productlijst, waarin u onder de bestelcode Replacer kunt opzoeken of voor uw merk motorfiets een digitale vervangingsunit beschikbaar is.

Carmo electronics heeft met zijn programmeerbare ADI (ontsteking) en AFI (ontsteking en injectie) systemen aantoonbare resultaten behaald. Zo heeft het Ten Kate Honda Team sinds 2000 haar Honda motorfietsen in de Supersport klasse uitgerust met het Carmo electronics AFI systeem. In 2002 en 2003 heeft dit succesvolle Nederlandse team het wereldkampioenschap behaald.



Binnenwerk digitale vervangingsunit

Klantspecifieke oplossingen

Carmo electronics is in staat door zijn specialistische kennis van motorelektronica klantspecifieke oplossingen aan te dragen. Voorbeelden hiervan zijn het vervangen van mechanische ontstekingen van klassieke motoren. Hiervoor kan Carmo electronics een in eigen beheer ontwikkelde digitale ontstekingsunit leveren, waarbij gratis advies wordt gegeven over de nodige aanpassingen in het ontstekingsstelsel van de motorfiets.

Hebt u een motorfiets met een toeren- of vermogenbegrenzer waardoor uw motorfiets niet optimaal kan presteren? Carmo electronics heeft de expertise in huis om toerenbegrenzers te verwijderen en vermogenbegrenzers te verwijderen. Informeer u naar onze mogelijkheden.

Ad 3. Programmeerbare ontstekings- en injectiesystemen motorsport

Carmo electronics is sinds 2000 actief in de motorsport voor uiteenlopende voertuigen met een verbrandingsmotor als: motorfietsen, jetski's, powerboats, trikes, quads, go-karts en minibikes. Voor deze professionele markt heeft Carmo electronics volledig programmeerbare ontstekings- (ADI) en injectiesystemen (AFI) ontwikkeld. Deze zeer geavanceerde systemen zijn ontworpen volgens de laatste technologieën met als doel maximale prestaties uit de motor te halen.

De programmeerbare ontstekings- en injectiesystemen worden

ALS ALLEEN WINNEN TELT

compleet geleverd met software, programmeerkabel en gebruikershandleiding, zodat u deze systemen zelf kunt programmeren. Zo bent u verzekerd van optimale motorprestaties in elke situatie. De software is geschikt voor elke laptop en personal computer, die uitgerust is met een RS232-communicatiepoort.

Bent u geïnteresseerd in de laatste ontwikkelingen op het gebied van onze programmeerbare ADI en AFI systemen, vraagt u dan naar onze speciale leaflet. Deze kunt u ook downloaden van onze website www.carmo.nl. U vindt er een uitgebreide referentielijst en u kunt demosoftware downloaden om een indruk te krijgen van de mogelijkheden.



Testen AFI systeem nieuwe motorfiets

Ad 4. Aanverwante elektronica producten verbrandingsmotoren

Carmo electronics levert verschillende elektronica producten voor alle verbrandingsmotoren, zoals: dynamo's, spanningsregelaars en ontstekingsspoelen. De producten zijn van uitstekende kwaliteit en worden tegen concurrerende prijzen binnen 3 dagen uit voorraad geleverd. In de Productlijst achterin deze brochure kunt u terugvinden welke producten uit voorraad leverbaar zijn.

Naast de uit voorraad leverbare producten kan Carmo electronics u van dienst zijn bij specifieke wensen over elektronicasystemen. In die gevallen bespreekt Carmo electronics de mogelijkheden en maakt duidelijke afspraken met u over kosten en levering, zodat u niet voor verrassingen komt te staan. Zo biedt Carmo electronics een snelle herwikkel-service van ontstekingsspoelen en dynamo's aan, die aanzienlijk goedkoper is dan de aanschaf van een nieuw exemplaar.

Garantie

Alle producten worden geleverd met superieure onderdelen en voldoen aan de nieuwste kwaliteitsnormen. Daarnaast besteedt Carmo electronics de grootst mogelijke zorg aan haar dienstverlening. Hierdoor kan Carmo electronics een garantie van 6 maanden geven op alle geleverde producten en diensten. Gaat het product onverhoopt defect binnen die periode, dan wordt het probleem kosteloos verholpen.

In het geval van een reparatie of aankoop van een Carmo electronics vervangingsunit ontvangt u een garantiecertificaat, dat u gedurende de garantieperiode goed dient te bewaren. Op vertoon van dit certificaat kunt u gebruik maken van de garantieregeling.

Deskundig advies

Voor deskundig advies of vragen over onze uitgebreide mogelijkheden en prijzen kunt u telefonisch contact opnemen met Carmo electronics: +31 (0)492 565220 of kijk op onze website: www.carmo.nl



WK racer met Carmo AFI systeem

FOR HIGH PEAK MOTOR PERFORMANCE

ORGANIZATION

Carmo electronics is an innovative company specializing in motor electronics. Since the foundation in 1994, Carmo electronics has specialized in testing and repairing ignition systems of motorcycles. Carmo electronics also develops digital ignition- and injection systems for almost any kind of combustion engines. Because of its assessment and flexible organization structure Carmo electronics is able to provide customer specific requirements.

RELIABLE PARTNER

The many years of experience and particular knowledge make Carmo electronics a reliable partner in engine electronics. Meanwhile customers worldwide take advantage of the service and products Carmo electronics provide. An in-house located Research & Development division allows Carmo electronics to rapidly supply the needs of development in this specific market. Furthermore it allows Carmo electronics to test brand new technologies and to develop innovative products for consumer- as well as the professional market.

SERVICE AND PRODUCTS

Carmo electronics aims its service and products on the motor electronics of vehicles with a combustion engine. Beside service and products of mainly motorcycles there are for example quads, trikes, go-karts, water-jets, powerboats and mini-bikes. The service can be categorized as follows:

1. Testing and repairing ignitionsystems
2. Universal replacement ignitionsystems
3. Programmable ignition- and injectionsystems for motorsports
4. Related electronic products

Ad 1. Testing and repairing ignitionsystems

When you have a motorcycle with a possibility of malfunction in the electronic ignitionsystem, Carmo electronics advises to test this suspicious part. Testing an ignitionsystem means it will be exposed to all kind of circumstances such as: duration, vibration, temperature, moisture, load, and revolutions. Testresults are showed on a supplied graphical presentation. Beside ignitionsystems Carmo electronics is also capable of testing other electronic components on the motorcycle, for example: the injectionsystem, the generator or rectifier/regulator.

Reliable repairing guaranteed

Carmo electronics is able to repair a defective ignitionsystem very accurate and reliable. For this, only the ignitionsystem has to be send. Carmo electronics has developed a very unique simulation

protocol to generate every possible kind of signal your motorcycle may generate. Repair is executed with high-grade parts and guarantees maximum reliability. Repaired units are finished with a very strong and durable coating that protects electronic parts for the influence of extreme weather circumstances.

Always send a clear description of malfunction together with the suspicious electronic part. In this case Carmo electronics guarantees testing, repairing and sending back the unit within 3 days.

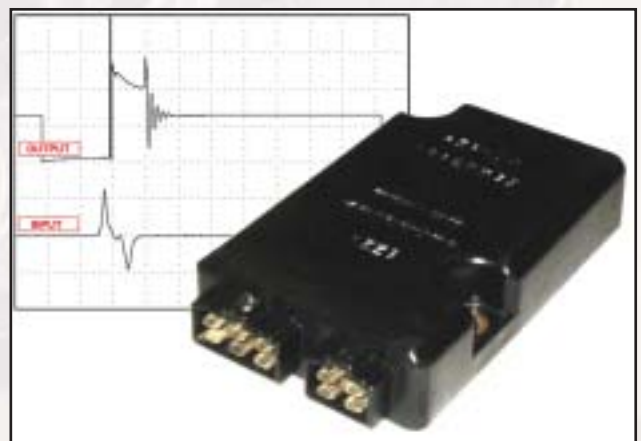
Benefits

The main benefit of repairing a unit in contrast with buying a more expensive new one is an indication of the possible cause on the bike that appears from the broken electronic parts. Even if the malfunction is not in the ignition unit, but elsewhere in the electronic system. This information is supplied totally free of charge together with the repaired ignition unit. This way you are able to replace defective parts in the electrical system of the motorcycle and prevent the ignition unit breaking again. This saves a lot of time and a great deal of unnecessary expense.

Repairing ignitionsystems of almost any kind of motorcycle is possible, under which the so-called potted units. Hard potted units can only be tested. The measure of hardness can be judged by putting a fingernail in the potting. If a mark remains the unit is potted with a soft material that makes repairing possible.

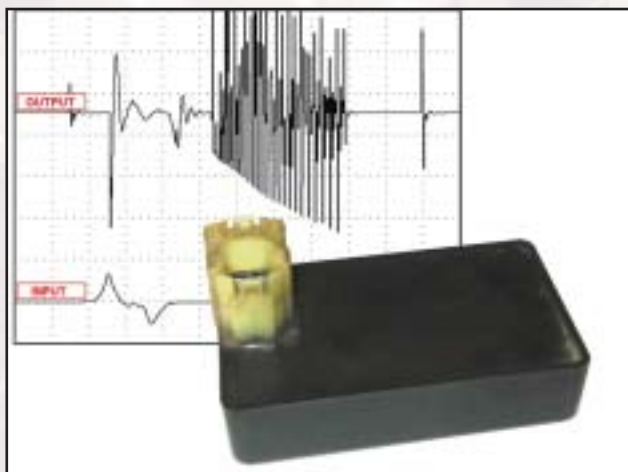
Look at the attached list at the end of this brochure if repairing is possible.

Examples of common electronic problems with a broken ignitionsystem:



Example 1. Yamaha Virago XV: Starting problems, less engine power, intermittent falling out 1 cylinder.

ELECTRONICAL MOTOR INNOVATION



Example 2. Honda XL600V: Intermittent falling out 1 cylinder during trip on bad road-surface.

Ad 2. Universal replacement ignitionsystems

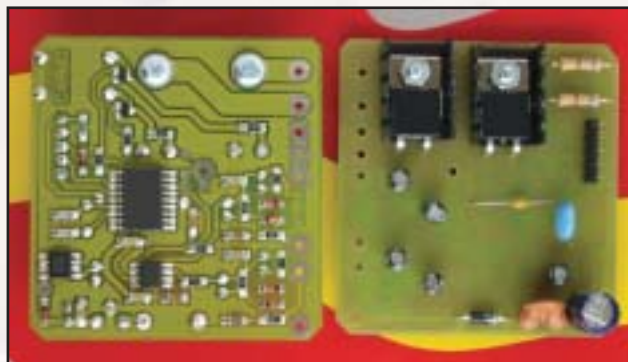
It is not always possible to repair an ignition unit reliable. For example, irreparable damage on a printed circuit board due to burned out electronic parts. Also potted ignition units with a hard material are not repairable. In those cases Carmo electronics can offer a digital replacement ignition. This ignitionsystem has been developed by Carmo electronics. Sophisticated software together with high-grade SMD technology makes it state-of-the-art electronics with minimum of dimensions and can be used on almost every motorcycle. The highest demands on reliability and accuracy will supply optimal performance and withstand severe vibrations and heavy loads. The digital replacement ignition unit is finished with an ultra strong coating for optimal protection against extreme weather circumstances.

Carmo electronics has digital replacement ignitionsystems in stock and therefore can supply a digital replacement unit within 3 days.

Advantages

One of the greatest advantages is a digitally programmed accelerate-detection invented by Carmo electronics. Beside the digitally programmed advance/retard mapping the accelerate-detection is supplied standard with a digital replacement ignition unit and considerably improves performance of your motorcycle!

Universal replacementunit: sophisticated software together with high-grade SMD technology makes it state-of-the-art electronics with minimum of dimensions and can be used on almost every motorcycle.



Inside digital replacement unit

Another advantage of a digital replacement ignition of Carmo electronics is the possible cause of defect that appears from testing the original ignition unit. This in contrast with buying an expensive new ignition. Carmo electronics supplies this information free of charge with purchase of a digital replacement ignition unit. You have the opportunity to replace defective parts in the electronic system of your motorcycle in advance so that burning out your ignition unit again will be prevented. This will save a lot of time and a great deal of unnecessary expense. Unlike a new original ignition unit the digital replacement ignition from Carmo electronics comes with 6 months guarantee.

Look at the attached list at the end of this brochure for availability of digital replacement ignitionsystems. If your desired ignition is not listed please contact us. It's possible that this replacement unit is available now.

Customer specified solutions

Development of digital ignition systems and particular knowledge of motor electronics enable Carmo electronics to meet customers' specific requirements. For example digital replacement ignition units to build on a classic bike with an original mechanical ignition. Advise on eventual necessary modifications on the motorcycle are given free of charge. Do you have a motorcycle with rev- or power-limiter that keeps you from optimal performance? Carmo electronics has the ability to shift the rev-limiter or to remove the power-limiter. Please inquire for details.

Ad 3: Programmable ignition- and injection systems for motorsports

Carmo electronics has been active in motorsports since the year 1998 for different vehicles with combustion engines. Ignition- and injection systems are applied successfully in motorcycles, go-karts, scooters, water-jets, quads, trikes and powerboats. For this pro-

IT'S THE PERFORMANCE THAT COUNTS

Professional market Carmo electronics has developed full programmable ignition- (ADI) and injection systems (AFI). State-of-the-art motor management systems developed with latest technologies and high-performance electronic parts to achieve only one goal: squeeze the maximum performance out of your bike!



Testing AFI system new motorbike

The programmable ignition- and injection systems are supplied complete with software, program cable and user's manual. This way you are able to program the system on your own so whatever circumstances you will face, your bike will perform to the maximum level. Time after time. Software provided will run on every laptop or personal computer with rs232 or usb 2.0 (optional usb to rs232 converter available). Are you interested in latest developments of our programmable ADI and AFI systems, please ask for the special leaflet Products Motorsports. Also to be downloaded on our web-site www.carmo.nl. You will find a comprehensive reference list and you are able to download software for an impression of possibilities.

Carmo electronics has already obtained great results with the Advanced Digital Ignition and the Advanced Fuel & Ignition system. Ten Kate Honda equipped their fast yellow machines with the AFI system since 1999. In the years 2002 and 2003 this successful Dutch team became champion in the World Championship of the Supersport600.

Ad 4. Related electronic products

Carmo electronics supplies different kind of high-grade electronic parts for motorcycles, such as: generators, rectifier-regulators, ignition coils and high-tension coils. These high quality products have competitive prices and can be delivered from stock within 3 days. You will find the list of electronic products attached at the end of this brochure. Beside the products deliverable from stock Carmo electronics can be of use for particular needs of electronic

systems. In those cases Carmo electronics will discuss the possibilities and makes clear agreements about costs and delivery so you will never get a nasty shock. Among these conditions Carmo electronics offers a rewind-service for ignition coils and generators, much cheaper than buying a new one.

Guarantee

All products are supplied with high-grade parts and meet the needs of the newest standard of quality. Carmo electronics spends the greatest amount of care for service. This is why Carmo electronics gives 6 months guarantee on all their products. If the product gets damaged within terms of guarantee it will be fixed totally free of charge.

In case of repair a broken unit or purchase a digital replacement ignition, you will receive a warranty. This warranty together with the invoice has to be saved during the period of guarantee. Only on showing the warranty and invoice Carmo electronics gives you the right of guarantee.

Expert advice

For expert advice or questions about the extensive possibilities and prices you can contact Carmo electronics by phone: +31 (0) 492 565220 or check our web-site: www.carmo.nl



WK racer with Carmo AFI system

Productlist

TYPE	YEAR	REPAIR CODE	REPLACER	GENERATOR	REGULATOR/ RECTIFIER
APRILIA					
RS 125	99	REP2			
RS 250	95-96				
PEGASO 650	94-96	REP2		G42	RR10
PEGASO 650	99-03	REP2		G42	
SL1000 FALCO	99-02			G7	
RSV MILLE/R/SP	99-02			G7	
RST FUTURA	01-02			G7	
ETV CAPONORD	2002			G7	
BIMOTA					
SUPERMONO	REP2				-
BMW					
R50 /5					RR45
R60 /5					RR45
F650	-97	REP2		G14	RR71
F650	97-01	REP2		G7	RR71
R75 /5/6		REP1			RR45
R80 /6/7G/S					RR45
R90 /6/S					RR45
R100 /7/CS/RS/RT/S/T		REP1/3			RR45
R1100 /R/RS/G/S		REP3			
CAGIVA					
125 MITO/CANYON		REP2			
750 ELEFANT		REP2			RR51
900 ELEFANT		REP2			RR51
DUCATI					
350 DESMO	70-76			G92	
350 SS/400SS/600SS 750 SS/900SS			✓	G92	RR51
500 PANTAH	1980			G92	RR51
600/750/900 MONSTER	1994	REP2	✓	G92	RR51
748	1995			G92	RR51
750/906 PASO	1986		✓		RR51
750 SPORT	74-76		✓	G92	RR51
750 F1	1985				RR51
851/888/916 STRADA	1989	REP3		G92	RR51
916 BIPOSTO		REP3			
900 DARMAH				G92	RR51

TYPE	YEAR	REPAIR CODE	REPLACER	GENERATOR	REGULATOR/ RECTIFIER
DUCATI					
900 ST2 / ST4	98-01	REP3			RR53
907 I.E.	1992	REP3		G92	RR51
996	99-01	REP3		G92	RR53
HONDA					
XL100					RR67
CA125 REBEL	95-97				RR79
MTX125					RR67
XL125 / 200 R					RR67
CB TWOFIFTY		REP2			
MTX250					RR67
CB250 NIGHTHAWK	1992	REP2			
CB250 N/RS/T					RR18
CBR250					RR58
CMX250 REBEL	85-01	REP2			RR18
CM250 C CUSTOM	82-83				RR18
NSR250	93-96	REP2		G72	RR18
NX250		REP2			RR58
RS250 /KICKSTART				G49	RR18
VT250F2 / VTR250	88-90	REP1	✓	G73	RR15
XL250 R/RFVC/S	78-87	REP2			RR67
CB350	1974				RR16
CB350 F	73-76				RR24
CB350 S	1987				RR66
XL350 R	1985	REP2		G46	RR67
CBR400 R (NC29)	85-87	REP1	✓	G17	RR63
CBR400 RR (NC23)	1988	REP1	✓	G17/G74	RR58
CBX400 F	1985	REP1	✓		RR19
CB1-400 (NC27)	89-91	REP2	✓	G17	RR58
CB400 A	1979				RR18
CB400 F	76-78				RR24
CB400 N	1980				RR18
CB400 T	1978				RR18
CM400 A	79-81				RR18
CM400 T	80-84	REP2			RR18
NS400 R		REP2		G72	RR18
RVF400 R (NC35)	94-97	REP2		G53/G72	RR58
VFR400 (NC24)	1986	REP1	✓	G72/G17	RR63
VFR400 UK MODEL	1986	REP1	✓	G72	RR59
VFR400 R (NC21)	1986	REP1	✓	G72	RR15/58

Productlist

TYPE	YEAR	REPAIR CODE	REPLACER	GENERATOR	REGULATOR/ RECTIFIER
HONDA					
VFR400 R (NC27)	86-89	REP1	✓	G72	RR15
VFR400 R (NC30)	89-93	REP1	✓	G72	RR58
VFR400 Z	1986	REP1	✓	G72	RR63
VF400 F	1985	REP1	✓	G74	RR65
VLX400 SHADOW		REP1	✓	G7	RR65
VT400 C/SHADOW	83-86	REP1	✓	G7	RR65
XR400	83-85			G44	
CB450	72-77	REP2			RR18
CB450 N/DX/S	1984	REP2			RR18
CB450 SC NIGHTHAWK	82-86	REP2			RR18
CMX450 REBEL		REP2			RR18
CB500	1994	REP2		G17	RR58
CB500 F	73-77	REP2			RR24
CX500 /C	78-80		✓		RR16
CX500 AB	79-81	REP2		G47	RR18
CX500 TURBO	1983	REP2/3		G8	RR65
CX500 C (IMPORT)	79-82	REP2			RR16
CX500 C CUSTOM	1981	REP2			RR65
CX500 E PROLINK		REP2		G8	RR65
FT500	1982			G49	RR18
GB500 CLUBMAN	1992			G45	
GL500	82-83	REP3		G8	RR65
NX500 DOMINATOR	88-91	REP2			
NX500 DOMINATOR	92-97	REP2			
VF500 C V30 MAGNA	84-85	REP1	✓	G74	RR65
VF500 F/F2	84-86	REP1	✓	G74	RR65
VT500 C SHADOW	83-86	REP1	✓	G7	RR65
VT500 E	83-85	REP1	✓	G7	RR25
VT500 FT ASCOT	83-84	REP1	✓	G7	RR65
XBR500	1985			G46	RR18
XL500 R	1982			G41	RR67
XL500 S	79-81				RR67
XR500	79-81				RR67
XR500 R	1983			G41/46	RR67
CBX550 F/F2		REP1	✓		RR22
CB550 F/K3	75-78				RR24
CB550 SC NIGHTHAWK	1983	REP1	✓		RR19/22
CBR600 F1 / FJ	86-90	REP1	✓	G74	RR15/62
CBR600 F2 / F	91-94	REP1	✓	G54	RR58

TYPE	YEAR	REPAIR CODE	REPLACER	GENERATOR	REGULATOR/ RECTIFIER
HONDA					
CBR600 F3	95-97	REP1	✓	G54	RR58
CBR600 F4	98-00	REP2	✓	G52	RR58
CBX600 E	83-87	REP1	✓		RR21
NTV600	1988	REP1	✓	G12	RR25
VLX600 SHADOW		REP1	✓	G7	RR25/65
VT600C SHADOW	1988	REP1	✓	G7	RR25
XL600	1985			G41	
XL600 R	83-87	REP2		G41/46	
XL600 RM	1986	REP2		G43	RR18/67
XL600 V TRANSALP	87-ON	REP2		G7	RR64
XR600 R	88-90	REP2		G41/46	RR67
CBX650	1983	REP1	✓		RR21
CB650 C	80-81	REP1	✓		RR19
CB650 C NIGHTHAWK	80-83	REP1	✓	G21	RR19
CB650 SC NIGHTHAWK	1983	REP1	✓	G19	RR19
CB650 SC (IMPORT)	83-85	REP1	✓		RR21
CB650 Z	78-82			G21	RR19
CX650 E/C/TURBO	1983			G8	RR65
GL650	1983	REP3		G8	RR65
NTV650 /REVERE		REP1	✓	G8	RR25
NTV650 DEAUVILLE		REP1	✓		RR58
NT650 GT HAWK	88-91	REP1		G8	RR25
NV650 C	1983				RR65
NX650 DOMINATOR	92-96	REP2		G9	
NX650 DOMINATOR	88-91	REP2		G9	RR66
SLR650	1997			G9	
XL650 L	1994			G9	
XR650		REP2		G44	RR67
XRV650	1988	REP2			
CB700 S NIGHTHAWK	84-87	REP1	✓		RR22
CB700 SC NIGHTHAWK	84-86	REP1	✓		RR19
VFR700 F	86-87	REP1	✓	(G14)	RR15/63
VF700 C V45 MAGNA	84-87	REP1	✓	G14	RR65
VF700 F INTERCEPTOR	84-85	REP1	✓	G14	RR65
VF700 S V45 SABRE	84-85	REP1	✓	G14	RR65
VT700 C	86-92	REP1	✓	G8	RR12/65
VT700 C SHADOW	84-85	REP1	✓	G8	RR12/65
CBX750 F/F2	1983	REP1	✓		RR19
CB750 NIGHTHAWK	1991	REP1	✓		RR23

Productlist

TYPE	YEAR	REPAIR CODE	REPLACER	GENERATOR	REGULATOR/ RECTIFIER
HONDA					
CB750 C (DOHC)	80-82	REP1		G21	RR21
CB750 F1	75-76				RR24
CB750 F2 (SEVENTYFIFTY)	92-96	REP2	✓		RR23
CB750 F2 (SOHC)	77-79				RR24
CB750 F/F2 (DOHC)	79-83			G21	RR21
CB750 KZ (DOHC)	79-83			G21	RR21
CB750 K1-6	69-76				RR24
CB750 K7 (K1-7)	69-78				RR24
CB750 SC NIGHTHAWK	82-83	REP1	✓	G21	RR21
CB750 SC NIGHTHAWK	84-87	REP1	✓		RR19
NR750	92-93				RR58
NV750 C	1983			G8	RR65
NV750 C(G) SHADOW	1986			G8	RR65
RVF750 R	94-96	REP2		G72	RR58
VFR750 F G/H	88-89	REP1	✓	G14	RR62
VFR750 F J/K	90-91	REP1	✓	G75	RR58
VFR750 F L	92-ON	REP2	✓	G52	RR58
VFR750 R	1988	REP1	✓	G14/75	RR58
VF750 C V45 MAGNA	82-89	REP1	✓	G14	RR65
VF750 C V45 MAGNA	94-00	REP1	✓	G75/52	RR62
VF750 F INTERCEPTOR	83-84	REP1	✓	G14	RR65
VF750 S V45 SABRE	82-83	REP1	✓	G14	RR65
VT750 C SHADOW	83-85	REP1	✓	G8	RR12/65
VT750 C SHADOW ACE	98-01	REP2	✓	G8	(RR58)
XLV750 R	1983	REP2			
XR750 AFRICA TWIN	89-97	REP2		G7	RR64
PC800 PACIFIC COAST	89-97	REP1	✓	G8	RR58
VFR800 F	98-01	REP1	✓	G52	RR53
VT800 C	1988	REP1	✓	G8	RR12/65
CBR900 RR FIREBLADE	92-95	REP2	✓	G52	RR58
CBR900 RW FIREBLADE	96-99	REP2	✓	G7	RR58
CBR929 RR FIREBLADE	00-03		✓	G7	
CB900 F/F2/CUSTOM				G21	RR21
CBR1000 /F	87-88	REP2	✓		RR19/23
CBR1000 F	89-96	REP2	✓		RR23
CBX1000	79-80				RR22
CBX1000 PROLINK	81-82	REP1			RR22
CB1000 BIG ONE	93-97	REP2	✓		RR23
CB1000 C CUSTOM	1983	REP2	✓		RR22

TYPE	YEAR	REPAIR CODE	REPLACER	GENERATOR	REGULATOR/ RECTIFIER
HONDA					
GL1000 GOLDWING		REP3		G6	RR29
VF1000 INTERCEPTOR	1985	REP1	✓	G14	RR65
VF1000 F/F2/R	84-86	REP1	✓	G14	RR65
VTR1000 FIRESTORM	1997	REP3		G52	RR58
VTR1000	97-00	REP3			RR58
XL1000V		REP2			
CBR1100 XX BLACKBIRD	96-98	REP3	✓	G52	RR58
CBR1100 XX FUEL INJECTION	99-ON	REP3	✓		RR69
CB1100 F/R		REP1	✓		RR22
CB1100	1983	REP1			RR21
GL1100 GOLDWING	80-83	REP3		G6	RR29
ST1100 PAN EUROPEAN	90-01	REP2	✓		RR23
VF1100 C/S V65	83-86	REP1	✓	G14	RR65
VT1100 C SHADOW	85-94	REP1	✓	G8	RR12
VT1100 C2 ACE	95-97	REP1	✓	G8	(RR12)
GL1200 GOLDWING	84-87	REP3		G6	RR29
GL1200 SEI GOLDWING	ALL	REP3			RR57
CB1300 F		REP2	✓		
GL1500 GOLDWING	1988	REP3			
KAWASAKI					
EL125 ELIMINATOR	1997	REP1	✓		
KMX125		REP2			RR26
KLT160		REP2			
KLT185		REP2			
EL250 ELIMINATOR	89-95	REP1	✓	G2	RR14
EX250	86-96	REP2	✓	G2	RR26
GPX250	1988	REP1	✓		RR26
GPX250 R	1988	REP1	✓	G2	RR26
GPZ250 BELT DRIVE	83-84		✓	G2/11	RR60
GPZ250 R NINJA	1986		✓	G2	RR14
KH250	73-79				RR10
KLD250		REP2			
KLR250		REP2		G45	RR60
KLX250	80-84	REP2			
KLX250 E	1993	REP2			
KL250		REP2			
KZ250	80-83				RR60
KR-1S		REP1		G83	RR26
ZZ-R250	90-93	REP1	✓	G2	RR26

Productlist

TYPE	YEAR	REPAIR CODE	REPLACER	GENERATOR	REGULATOR/ RECTIFIER
KAWASAKI					
Z250 /LTD	80-82	REP1	✓		RR60
LAKOTA 300		REP2			
GPZ305	1981	REP2			RR26
Z305 LTD/CSR		REP2			RR26/60
EN400	86-90	REP1	✓	G11	RR26
GPX400 R	87-89	REP1	✓	G73	RR26
GPZ400 UNITRAK	1982	REP1	✓	G2	RR26
GPZ400 R	85-89	REP1	✓		RR26
KH400	74-79				RR60
KLE400		REP1	✓		
KLE400	1993	REP1	✓		
ZEPHYR 400	1989	REP1	✓		RR26
ZL400 ELIMINATOR	1990		✓		RR26
ZR400 F/R UNITRAK			✓	G2	RR14/26
ZXR400	1989	REP1	✓	G1	RR26
ZZ-R400	93-96	REP1	✓	G73	RR26
ZZ-R400	89-92	REP1	✓	G73	RR26
Z400 J	79-83				RR60
Z400 LTD	79-83			G2/11	RR60
KZ440	80-83			G11	RR60
Z440	80-83		✓	G2/11	RR60
Z440 LTD			✓	G2/11	RR60
EN450	85-90	REP1	✓	G11	RR14
EN454	85-89		✓	G11	RR14
EN500	90-01	REP2	✓	G11	RR14
ER5	1997				RR26
EX500 GPZ500 S	87-01	REP1/2	✓	G11	RR14/26
KH500	74-79				RR60
KLE500		REP1	✓		
KZ500			✓	(G2)	RR10/14
Z500	79-83			G2	RR60
GPZ550 A1	1982		✓	G2	RR26/37
GPZ550 UNITRAK	82-83		✓	G2	RR37
GPZ550 UNITRAK	84-88		✓	G2	RR26/37
GT550	1985		✓	G1	RR10
GT550 KAW			✓		RR14
KZ550	79-82			G2	
KZ550 LTD	79-84		✓	G2	RR37
Z550 /LTD	80-ON		✓	G2	RR14/37

TYPE	YEAR	REPAIR CODE	REPLACER	GENERATOR	REGULATOR/ RECTIFIER
KAWASAKI					
ZR550 ZEPHYR	90-96	REP1	✓	G2	RR26
ZR550 F UNITRAK			✓	G2	RR14/37
ZX550			✓		
GPX600 R	87-		✓	G73	RR26
GPZ600 /R NINJA	1986		✓	G73	RR26
KL(R)600		REP2		G45	RR26
ZL600 ELIMINATOR	86-00		✓	G73	RR26
ZX-6 NINJA R	85-97	REP2	✓	G73	RR26
ZX-6 D (SINGLE RAM AIR)	90-93	REP2	✓	G73	RR26
ZX-6 E (DUAL RAM AIR)	94-00	REP2	✓	G73	RR26
ZX6-R	93-97	REP2	✓		RG25
ZX6-R	98-01	REP2	✓	G1	RR44
ZZ-R600		REP1			
KLR650 /R /TENGA	84-01	REP2		G45	RR26
KLX650 R	93-96	REP2		G45	RR26
KZ650			✓		RR37
KZ650 C2/C3	78-80		✓	G1+RR10	RR60
KZ650 B1/B2/C1	76-79				RR34
KZ650 F/E1/F1	81-84		✓	G1+RR10	RR60
KZ650 LTD/CSR	79-83		✓	G1+RR10	RR34/60
KZ650 SR	78-81		✓	G1+RR10	RR60
SR650					RR37
VN700 VULCAN	1985	REP1	✓	G5	RR26
ZX7 R/RR	87-01	REP2	✓		RG25
ZR7 /S	00-02	REP2	✓	G1	
GP750 NINJA	1987		✓		
GPZ750 TURBO	84-85	REP1/3	✓	G4	RR14
GPZ750 UNITRAK A1/A3	83-84	REP1/3	✓	G1	RR26
GPZ750 R NINJA	84-87		✓		RG25
GT750	1986		✓	G1/2	RR14/26
KZ750 B (TWIN)	76-80				RR33/34
KZ750 E/E1	79-81		✓	G1+RR10	RR37/60
KZ750 (GPZ)	1982		✓	G2/4	RR14/26
KZ750 LTD (INLINE FOUR)	79-83		✓	G1+RR10	RR60
VN750 VULCAN	86-01	REP1	✓	G5	RR26
Z750 L	1984		✓	G2/G4	RR37
Z750 LTD BELT	83-84		✓		RR33/37
Z750 LTD TWIN	81-84		✓		RR33/60
Z750 TURBO	1984		✓	G4	RR14/26

Productlist

TYPE	YEAR	REPAIR CODE	REPLACER	GENERATOR	REGULATOR/ RECTIFIER
KAWASAKI					
ZR750 ZEPHYR	1991	REP1	✓	G1/2	RR26
ZXR750	89-95	REP1	✓		RG25
VN800 CLASSIC	96-97	REP2	✓	G5	RR26
VN800 VULCAN	95-01	REP2	✓	G5	RR26
GPZ900 R NINJA	84-95		✓		RG25
ZL900 ELIMINATOR	85-86		✓	G3	RR14
ZX9 R NINJA	94-97	REP2	✓		RG25
ZX9 R NINJA	98-01	REP2	✓	G9	
Z900 /LTD	76-77		✓	G90	RR10
GPZ1000 /RX	85-89		✓		RG25
GTR1000	1986		✓		RG25
KZ1000 Z1R	78-80		✓	G90	RR10
KZ1000 A1/A2/LTD	77-78		✓	G90	RR10
KZ1000 INJECTION/LTD	79-80	REP3	✓	G3	RR14
KZ1000 J/LTD	79-83		✓	G3	RR14/37
KZ1000 C2/C3/C4	79-81		✓	G3	RR14/37
KZ1000 P	80-01		✓	G3	RR14
KZ1000 MK2	79-80		✓	G1	RR14
KZ1000 R	82-83		✓	G3	RR14
KZ1000 ST	79-81		✓	G1	RR37
ZG1000	86-01	REP2			RG25
ZL1000 ELIMINATOR	1986	REP2	✓	G3	RR14
ZX10 TOMCAT	88-91		✓		RG25
GPZ1100	95-97		✓		RG25
GPZ1100 UNITRAK	83-85		✓	G3	RR14
GPZ1100 GP/LTD/R/ST	81-85	REP3	✓	G3	RR14
KZ1100 LTD / SPECTRE	81-83		✓	G3	RR14
KZ1100 R	84-85		✓	G3	RR14
KZ1100 SHAFT	81-83		✓	G3	RR14
ZN1100	1984				RR26
ZR1100 ZEPHYR	91-93	REP2	✓	G2/4	RR26
ZXR1100	97-00		✓		RG25
ZX-11	89-97		✓		RG25
ZZR1100		REP2			
ZG1200 VOYAGER	87-97	REP2	✓	G1 + G3	RR26
ZG1200 VOYAGER	97-01	REP2	✓		RG25
ZX12	98-ON		✓	G108	RR44
Z1300 A1/A2	79-84		✓	G3	RR47
KZ1300 VOYAGER/TOURING	79-86		✓	G1 + G3	

TYPE	YEAR	REPAIR CODE	REPLACER	GENERATOR	REGULATOR/ RECTIFIER
KAWASAKI					
Z1300 EFI	84-89	REP3	✓	G1	RR46
Z1300 INJECTION		REP3	✓	G3	
VN1500 VULCAN	87-01	REP1/2	✓	G9	RR26
VN1500 SE	88-93	REP1/2	✓	G9	RR26
KTM					
GS500					RR10
ER600 LC4					RR10
LAVERDA					
600 ATLAS					RR51
650 GHOST	1996				RR51
650 I.E.	94-96				RR51
668 I.E.	1996				RR51
750 SF					
RGS1000	1982			G2	RR10*
RGS1200				G2	RR10*
MOTO GUZZI					
V35	1977				RR45
V50 III					RR45
V65		REP3			RR45
850 LEMANS		REP3			RR45
850 T		REP3			RR45
850 T3		REP3			RR45
1000 CALIFORNIA II		REP3			RR45
1000 CALIFORNIA III		REP3			RR45
1000 DAYTONA		REP3			RR51
1000 LE MANS IV	85-89	REP3			RR45
1000 QUOTA		REP3			RR45/51
1000 SP	88-92	REP3			RR45
CALIFORNIA 1100	1994	REP3			RR51
1100 SPORT	1996	REP3			RR51
1100 QUOTA		REP3			
MUZ					
500 SILVER STAR				G7	RR8/26
660 SCORPION	1994	REP1	✓	G7	RR8/26
660		REP3			
SUZUKI					
CS125	1983			G1	

Productlist

TYPE	YEAR	REPAIR CODE	REPLACER	GENERATOR	REGULATOR/ RECTIFIER
SUZUKI					
DR125		REP2			RR13/27
GN125 /E	82-95	REP1	✓		RR10
GS125	1982				RR8
RG125	1985	REP1			RR27
XL125/185/250					RR68
DR250 S		REP2			RR27
GN250	82-96	REP1	✓	G5	RR10/13
GS(X)250	80-83		✓	G1	RR10
GS250	1981		✓	G1	RR10
LT250				G84	
RG250	1978	REP2			RR13
RGV250	1989	REP2			RR17
DR350 S	90-98	REP2		G84	RR27
SP370	77-80				RG12
GT380	73-77				RR77
DR400	80-83	REP2			
DRZ400		REP2		G18	RR17
GN400			✓	G5	RR10
GSF400 BANDIT	91-93	REP1/2	✓		RR17
GS(X)400 E/L/S/T	81-88		✓	G1	RR10
GS(X)400 F	81-84		✓	G1	RR13
GSX-R400		REP1	✓		RR17
GSX-R400 IMPORT		REP1	✓	G78	RR17
GS400	76-81		✓		RR10
GS400 E	89-96	REP1	✓	G1	RR17
VS400 INTRUDER	1995	REP1	✓		
RF400	1993	REP1	✓	G1	RR17
GS425		REP1	✓	G1	RR10
GN450			✓	G5	RR13
GS450 E/S	80-89		✓	G1	RR10
GS450 L	84-88		✓	G1	RR13
GS450 L	80-83		✓	G1	RR10
DR500 S	78-79				
GS500 E	89-97	REP1	✓	G1	RR17
GSF500				G77	
RG500	1987	REP2			RR13
GS(X)550 ES	84-88		✓	G4	RR11
GS550	77-81		✓	G1	RR10
GS550 KATANA	81-83		✓	G1	RR10

TYPE	YEAR	REPAIR CODE	REPLACER	GENERATOR	REGULATOR/ RECTIFIER
SUZUKI					
GS550 E/T	81-82		✓	G1	RR10
GS550 L	1983		✓	G1	RR9
GS550 L	79-82		✓	G1	RR10
GT550	73-77		✓		RR77
DR600 S	90-01	REP2		G43	RR10/13
GSF600 BANDIT	95-97	REP2	✓		RG25
GSX600 F KATANA	86-96	REP2	✓		RG25
GSX-R600 W (V)	92-97	REP2	✓		RG25
RF600 R	93-96	REP1	✓		RG25
VS600 INTRUDER	95-97	REP2	✓	G7/9	RR75
DR650	90-95	REP2		G43	RR73
DR650 R		REP2		G43	RR10
DR650 RE		REP2		G43	RR10
DR650 RS DAKAR	91-96	REP2		G43	RR10
DR650 S		REP2		G43	RR13
GR650 TEMPTER	1983			G1	RR9/10/13
GS650 KATANA	81-84		✓	G1	RR13
GS650 GL/GT	81-86		✓	G1	RR9/13
LS650	86-88	REP1	✓	G9	RR10
LS650 SAVAGE	95-99	REP1	✓	G9	RR27
SV650 S		REP2	✓		
XF650 FREEWIND	1997	REP2	✓	G43	RR27
XN85 TURBO	1983	REP3		G2	RR13
VS700 INTRUDER	85-91	REP1	✓	G7	RR75
DR750	1988	REP2		G45	RR73
DR750 S /BIG	89-96	REP2		G43	RR10
GS750	76-79		✓		RR10
GS(X)750		REP1	✓	G2	RR11
GS(X)750 E/EF/ES	83-88	REP1	✓	G2	RR13
GS(X)750 E/L/T/S	82-83		✓	G1	RR9
GSX750 F KATANA	89-97	REP2	✓		RG25
GS(X)750 S KATANA	82-83	REP1	✓	G1	RR9
GSX-R750	85-95	REP1	✓		RG25
GSX-R750 W (P-R-S)	93-95	REP2	✓		RG25
GSX-R750 SRAD	96-01	REP2		G16	RR55
GSX-R750 Y		REP3	✓		
GS750 /E/L	76-79		✓		RR10
GT750	73-78		✓		RR77
VS750 INTRUDER	86-91	REP1	✓	G7	RR75

Productlist

TYPE	YEAR	REPAIR CODE	REPLACER	GENERATOR	REGULATOR/ RECTIFIER
SUZUKI					
DR800 S /BIG	89-96	REP2		G43	RR10
VS800		REP2	✓		RR16
VS800 INTRUDER	91-97	REP2	✓	G7	RR75
VX800	90-96	REP1	✓	G7/74	RR27
VZ800 MARAUDER	97-99	REP2			RR56
DR850				G45	RR73
GS850 G/GL	79-88		✓	G1	RR10
XN850 TURBO	1983	REP3		G2	RR11
RF900 R (R-S-T-V)	94-97	REP2	✓		
GSX1000 E	82-84	REP3		G2	RR9
GS1000	78-80		✓	G2	RR10
GS1000 G	80-84	REP1	✓	G2	RR10
GS1000 KATANA	82-84	REP1	✓	G1	RR10
GSX-R1000 R	01-03	REP3	✓	G5	
TL1000	1997	REP3			RR62
TL1000 S (V)	97-01	REP3		G14	RR62
GS(X)1100 (16-VALVE)	80-81	REP1	✓	G2	RR9/10
GS(X)1100 E (16-VALVE)	81-82	REP1	✓	G2	RR9
GS(X)1100 E/ES/EF/G	83-89	REP1	✓	G2	RR13
GS(X)1100 L	80-82	REP1	✓	G2	RR9
GS(X)1100 S KATANA	82-84	REP1	✓	G1/2	RR9/10
GSX1100 KATANA	1993	REP1	✓	G1	RR13
GSX1100 F/G (KATANA)	93-94	REP2	✓		RG25
GSX-R1100	85-98	REP1	✓		RG25
GSX-R1100 SLINGSHOT	89-92	REP2	✓		
GSX-R1100 W (P-R)	93-94	REP2	✓		
GSX-R1100 W (S-T-V)	95-97	REP2	✓		
GS1100 G	81-83	REP1	✓	G2	RR9
GS1100 G	84-89	REP1	✓	G2	RR13
GSF1200 BANDIT	96-99	REP2	✓		RG25
GSX1200 X		REP2	✓		
GV1200 MADURA		REP1	✓	G8	RR75
GSX-R1300			✓		
VS1400		REP1	✓	G15	
VS1400 INTRUDER	87-99	REP1	✓	G9	RR75
GV1400 CAVALCADE	1985		✓		RR75
VL1500	98-01	REP2		G7	RR55
TRIUMPH					
ALL TRIPLES AND FOURS	95-00				RG25

TYPE	YEAR	REPAIR CODE	REPLACER	GENERATOR	REGULATOR/ RECTIFIER
TRIUMPH					
ALL TRIPLES	01-03				RG26
DAYTONA 750	91-92	REP1	✓		
TRIDENT 750	93-96	REP1	✓		
TRIDENT 750	91-92	REP1	✓		
750 BONNEVILLE T140		REP1	✓		
DAYTONA 900	93-96	REP1	✓		
SPEED TRIPLE 900	94-96	REP1	✓		
TRIDENT 900	93-96	REP1	✓		
TRIDENT 900	91-92	REP1	✓		
TRIDENT 900 SPRINT	93-96	REP1	✓		
TROPHY 900	95-96	REP1	✓		
TROPHY 900	91-92	REP1	✓		
TROPHY 900	93-94	REP1	✓		
T509 SPEED TRIPLE	1997	REP1	✓		
T595 DAYTONA	1997	REP1	✓		
DAYTONA 1000	91-92	REP1	✓		
TROPHY 1000	91-96	REP1	✓		
DAYTONA 1200	93-96	REP1	✓		
TROPHY 1200	93-96	REP1	✓		
YAMAHA					
MZ125		REP2			
DT125		REP2			
RD125 LC MK1		REP2			RR27
RD125 LC MK2/3		REP2			RR25
TDR125	88-90				RR8
TZR125	1987	REP2			RR27
XT125		REP2	✓		
XV125 VIRAGO	96-97	REP1			
XVS125					RR10
YZ125		REP2			
RD200 D/DX	77-80	REP2			
TW200	87-96				RR8
XT225					RR8
RD250 DX	75-79	REP2			RR31
RD250 E	78-79	REP2			RR14
RD250 YPVS	1984	REP2	✓	G84	RR8
FZR250	87-ON	REP1			RR8

Productlist

TYPE	YEAR	REPAIR CODE	REPLACER	GENERATOR	REGULATOR/ RECTIFIER
YAMAHA					
RZ250 DX	75-79				RR31
RZ250 E	1979				RR14
RZ250 LC	80-83				RR8
RZ250 YPVS	1984			G84	RR8
R1-Z	1993			G84	RR8
SR250	80-82	REP1	✓		RR7/8
TDR250	88-90	REP2			RR8
TZR250	1987	REP2			RR8
TZR250 V		REP2		G17	RR8
XS250		REP1	✓		RR38
XT250		REP2			
XV250 VIRAGO		REP1	✓	G73	RR8
YP250		REP2			
YZ250		REP2			
YZR250		REP1	✓		RR8/10
RD350 DX	1975	REP2			RR31
RD350 E	1979	REP2			RR14
RD350 LCF/N/F	88-90	REP2		G84	RR8
RD350 YPVS	83-85	REP2		G84	RR8
RZ350 E	1979				RR14
RZ350 LC	80-82				RR14
RZ350 LCF/N/F	88-90			G84	RR8
RZ350 YPVS	83-85			G84	RR8
TT350		REP2			
XT350	85-90	REP2			
XT350	1991	REP2			
YFM350				G43	
XS360	76-77	REP1	✓		RR38
DT400 MX	1977	REP2			
FZR400 RR EXUP	90-96	REP1	✓		RR8
FZR400 W		REP1	✓		RR8
RD400 DX	76-79				
RD400 E	1979				RR14
SRX400	ALL				RR42
XJ400	80-82	REP1	✓		RR32
XS400		REP1	✓		RR38
XS400 DOHC SECA	1982	REP1	✓		RR32
XV400	1988	REP1	✓		RR28
YZ400		REP2			

TYPE	YEAR	REPAIR CODE	REPLACER	GENERATOR	REGULATOR/ RECTIFIER
YAMAHA					
RD500 LC	83-86	REP2			RR8
SR500	78-81				RR54
XS500	75-78	REP1	✓		RR31
XT500	76-81	REP2			RG6
XT500 (4-VALVE)	83-89	REP2			
XV500	83-88	REP1	✓	G10	RR39
XJ550 / MAXIM		REP1	✓	G32	RR32
XT550	82-83	REP2			RR7
XV535	88-96	REP1	✓	G9	RR48
XZ550	82-84	REP1	✓	G7	RR39
FJ600	84-91	REP1	✓		RR8
FZR600 (P10 PICK-UP)	89-99	REP1	✓	G76	RR8
FZR600 R	94-95	REP2	✓	G75	RR8
FZ600	1986	REP1	✓		RR32
SRX600	1986	REP2		G45	RR8
TT600	83-89	REP2			RR7
XJ600	84-91	REP1	✓		RR8/40
XJ600 MAXIM		REP1	✓		RR8
XJ600 S SECA II	92-98	REP1	✓		RR8
XT600 KICKSTART	82-83	REP2			RR7
XT600 TENERE	83-89	REP2		G45	RR8/7
XT600 E	95-96	REP1/2	✓	G45	RR8/7
XT600 E	90-94	REP1/2	✓	G45	RR8/7
XT600 K	90-94	REP2		G45	RR8/7
YX600	87-90	REP1	✓	G75	RR8
YX600 RADIAN	86-90	REP1	✓		RR32
YZF600 R	94-01	REP2	✓	G74	RR26/55
YZF600 R THUNDERCAT	96-97	REP2	✓	G74	RR26/55
YZF R6	99-03	REP3	✓	G75	
SRX650		REP2			RR42
SZR660	1996	REP1	✓	G7	RR8/26
XJ650	80-83	REP1	✓	G32	RR32
XJ650 MAXIM		REP1	✓	G32	RR32
XJ650 TURBO	1982	REP1/3	✓	G32	RR32
XS650 (POINTS MODELS)	75-81			G62	RR35
XS650 SE/US/TC1	80-81	REP1	✓		RR32
XTZ660	89-96	REP1	✓	G9/73	RR8
XV(S)650 DRAGSTAR	97-01	REP2	✓		RR26
FZX700 FAZER		REP1	✓		RG25
XJ700 X MAXIM	1985	REP1	✓	G32	RR32

Productlist

TYPE	YEAR	REPAIR CODE	REPLACER	GENERATOR	REGULATOR/ RECTIFIER
YAMAHA					
XJ700 XS MAXIM	1986	REP1	✓		
XV700 VIRAGO	86-96	REP1	✓	G13	RR39
XV700 SE VIRAGO	81-85	REP1	✓		RR28
FZR750 R	87-95	REP1	✓		RG25
FZX750 FAZER	86-87	REP1	✓		RG25
FZ750	84-92	REP1	✓		RG25
XJ750	1983	REP1	✓	G32	RR32
XJ750 SECA	1982	REP1	✓	G32	RR32
XJ750 J MAXIM	1982	REP1	✓	G32	RR32
XJ750 XS MAXIM	85-86	REP1	✓		RR32
XS750 /SE	77-82	REP1	✓		RR31
XTZ750 SUPER TENERE	89-96	REP1	✓	G9	RR8
XV750 VIRAGO	86-96	REP1	✓	G7/10	RR39
XV750 SE VIRAGO	81-85	REP1	✓	G13	RR28/39
YZF750 R	93-97	REP2	✓		
YZF750 SP	93-97	REP2	✓		
TDM850	1992	REP1/2	✓	G7	RR8/40
TRX850	1995	REP2	✓	G9	RR8/26
XS850	80-81	REP1	✓		RR31
XJ900	83-84	REP1	✓	G32	G32
XJ900 DIVERSION	95-97	REP2	✓		RG25
XV920 J/K (SHAFT)	81-83	REP1	✓	G13	RR26/39
XV920 RJ (CHAIN)	81-83	REP1	✓	G13	RR26
FZR1000	87-88	REP1	✓		RG25
FZR1000 EXUP	89-95	REP1	✓		RG25
GTS1000		REP3			
XV1000	1981	REP1	✓		RR26
XV1000 VIRAGO	86-88	REP1	✓	G7	RR28
XV1000 SE	83-85	REP1	✓	G13	RR28/39
XV1000 TR1 (CHAIN)	81-85	REP1	✓	G13	RR26/39
YZF1000 R (R1)		REP2	✓		RR55
YZF1000 R THUNDERACE	96-97	REP2	✓		RG25
FJ1100	83-ON	REP1	✓		RG25
XJ1100 MAXIM	1981	REP1	✓		RR32
XS1100	78-83	REP1	✓		RR31
XV1100 VIRAGO	87-97	REP1	✓	G7	RR26/28
FJ1200	93-ON	REP1	✓		RG25
VMX1200 V-MAX		REP3	✓	G8	RR28
XJR1200	95-97	REP3	✓		RG25

TYPE	YEAR	REPAIR CODE	REPLACER	GENERATOR	REGULATOR/ RECTIFIER
YAMAHA					
XVZ1200 VENTURE		REP3	✓	G8	RR26/28/36
XVZ1300 ROYAL STAR	1996	REP3	✓	G8	RR26/28
XVZ1300 VENTURE ROYAL		REP3	✓	G8	RR36
XJR1300		REP3	✓		RG25
VL1500		REP2			RR55
ROAD STAR		REP3	✓	G75	

OFF-ROAD QUAD BIKES

TYPE	YEAR	REGULATOR/ RECTIFIER	GENERATOR	IGNITION COIL	LIGHTING COIL	HT COIL
HONDA						
ATC110/185	80-85			C6		HT55/80
ATC200 (X)(S)	81-87			C6		HT55/80
ATC250		RR60		C6		HT55/80
ATC250 ES		RR10				HT55/80
ATC250 ESF		RR10	G84			HT55/80
ATC250 R	85-86		G88	C6		HT55/80
ATV350		RR10				HT55/80
ATV-PILOT		RR10	G17			HT55/80
TRX200	86-88			C6		HT55/80
TRX250	86-89		G88			HT55/80
TRX300	88-02	RR18	G48			HT55/80
TRX350			G48			HT55/80
TRX300 EX	93-03		G91			HT55/80
TRX400 EX	99-03		G49			HT55/80
TRX450 FX	96-03		G58			HT55/80
KAWASAKI						
KEF300		RR26				HT55/80
KL250		RR26				HT55/80
KXT250 TECATE	84-87			C25/26	L25	
KLF110/185		RR26				HT55/80
KLF220/300		RR26	G4 (BAYOU)			HT55/80
KLT200/250		RR60				HT55/80
KLX300			G25			HT55/80
LAKOTA 300	95-02		G4			HT55/80
RL250						HT-CDI
SUZUKI						
DRZ400		RR17	G18			HT55/80

Productlist

TYPE	YEAR	REGULATOR/ RECTIFIER	GENERATOR	IGNITION COIL	LIGHTING COIL	HT COIL
SUZUKI						
LT125	83-87			C31	L31	HT-CDI
LT230	85-89	RR10		C6	(PICK-UP P10)	HT55/80
LT250 QUADRACER	84-92			C31	(PICK-UP P10)	HT-CDI
LT250 QUADRUNNER	91-96		G73			
LT-(F)4 WD	91-98		G73			HT55/80
RL250						HT-CDI
LT500	87-90			C31		
YAMAHA						
YFM80 MOTO4	84-88	REP2		C17		HT55/80
YFZ125 BREEZE		REP2				
YFS200 BLASTER	88-00			C17		HT55/80
YFB250	92-98	RR10/RR14			(PICK-UP P10)	HT55/80
YFM225		RR14				HT55/80
YFM350	97-01	RR10/RR14	G43	REP2	(PICK-UP P10)	HT55/80
YFM600/660		RR10		REP2		HT55/80
YFU 1		RR14				HT55/80
YFZ350 - BANSHEE	87-03		G87			HT55/80
YFM660 R RAPTOR	01-ON		G95			

MOTORCROSS & ENDURO BIKES

TYPE	YEAR	IGNITION COIL	LIGHTING COIL (POWER)	HT COIL	PULSE COIL	REGULATOR RECTIFIER	GENERATOR
HONDA							
CR60	ALL	C16		HT55/HT80			
CR80	ALL	C16		HT55	P16		
CR85	ALL	C16		HT55/HT80			
CR125	81-83	C80/C81		HTCDI			
CR125	84-85	C45	L45 (60W)	HT55/HT80			
CR125	86-89	C10/C59	L10 (45W)	HT55/HT80			
CR125	90-96	C15	L15 (80W)	HT55/HT80			
CR125	97-98	C97	L97 (50W)	HT55/HT80			
CR125	99-01	C99	L99 (50W)	HT55			
CR125	01 ON	C93	L93				
CR250	81-83	C80/C81		HTCDI			
CR250	84-85	C45	L45 (60W)	HT55/HT80			
CR250	86-88	C10/C59	L10 (45W)	HT55/HT80			
CR250	89-92	C15	L15 (80W)	HT55/HT80			
CR250	93-96	C23	L23 (80W)	HT55/HT80			
CR250	97-98	C97	L97 (50W)	HT55			

TYPE COIL	YEAR COIL (POWER)	IGNITION	LIGHTING COIL	HT COIL	PULSE RECTIFIER	REGULATOR	GENERATOR
HONDA							
CR250	99-01	C99	L99 (50W)	HT55			
CR250	02 ON	C92	L92	HT55/HT80			
CR500	85-86	C45	L45 (60W)	HT55/HT80			
CR500	86-87	C10/C59	L10 (45W)	HT55/HT80			
CR500	87 ON	C19	L19 (40W)	HT55/HT80			
CRF450	02 ON	C95 - C99	L95 (75W)	HT55/HT80			
CRF450 HI-POWER	02 ON		L96 (150W)	HT55/HT80			
XR250	ALL			HT55/HT80			G25
XR350	84-85			HT55/HT80			G41
XR400	ALL			HT55/HT80		RR67	G44
XR600	86 ON			HT55/HT80			G41
XR650 (R)	ALL			HT55/HT80		RR67	
KAWASAKI							
KDX125	81-88	C25/C26		HT55/HT80			
KDX175				HTCDI			
KDX200	83-88	C25/C26	L25 (65W)	HTCDI			
KDX200	89 ON	C31	L22 (65W)	HT55/HT80	P31		
KDX250	78-88	C25/C26	L25 (65W)	HT55/HT80			
KX60	80-96	C18/C52		HT55/HT80			
KX60	97 ON	C13 OR C24		HT55/HT80			
KX65	ALL	C21		HT55/HT80			
KX80	81-88	C11/C51		HT55/HT80			
KX80	89-91	C12	L12 (40W)	HT55/HT80	P10		
KX80	92 ON	C13	L13 (40W)	HT55/HT80	P10		
KX85	2001	Under Development		HT55/HT80			
KX100	81-88	C11/C51		HT55/HT80			
KX100	89-91	C12	L12 (40W)	HT55/HT80	P10		
KX100	92 ON	C13	L13 (40W)	HT55/HT80	P10		
KX125	80-86	C70/C71		HTCDI			
KX125	87-88	C11/C51		HT55/HT80			
KX125	89-91	C12	L12 (40W)	HT55/HT80	P10		
KX125	92-97	C13/C58	L13 (40W)	HT55/HT80	P10		
KX125	98 ON	C98	L98 (50W)	HT55/HT80	P10		
KX250	81-88	C11/C51		HT55/HT80			
KX250	89-91	C12/C53	L12 (40W)	HT55/HT80	P10		
KX250	92-97	C13/C58	L13 (40W)	HT55/HT80	P10		
KX250	98 ON	C98	L98 (50W)	HT55/HT80			
KX400	84-85	C30/C31	L31 (75W)	HT55/HT80			
KX500	84-85	C30/C31	L31 (65W)	HT55/HT80	P31		

Productlist

TYPE	YEAR	IGNITION COIL	LIGHTING COIL (POWER)	HT COIL	PULSE COIL	REGULATOR RECTIFIER	GENERATOR
KAWASAKI							
KX500	86-89	C11/C51	N/A	HT55/HT80	P31		
KX500	90 ON	C37	L31 (65W)	HT55/HT80	P31		
SUZUKI							
PE175/250/400				HTCDI			
RM80	80 ON	C80/C81		HTCDI			
RM100	80 ON			HTCDI	P10		
RM125	81-88	C80/C81		HTCDI			
RM125	89-94	C45	L45 (50W)	HT55/HT80	P10		
RM125	95-98	C46	L46 (50W)	HT55	P10		
RM125	98 ON	C47	L47	HT55	P10		
RM250	81-85	C80/C81		HTCDI			
RM250	86-93	C45	L45 (50W)	HT55	P10 (89 ON)		
RM250	94-97	C46	L46 (80W)	HT55	P10		
RM250	98-01	C47	L47(POWER JET)	HT55			
RM250	02 ON	C48	L48	HT55			
RM400	ALL	C80/C81		HTCDI			
RM500	81-84	C80/C81		HTCDI			
YAMAHA							
DT175		C30/C31		HT80			
IT200 N	ALL	C31		HT80			
KX420				HTCDI			
PW50	ALL	C17		HT80			
PW80	ALL	C18	L12 (40W)	HT80			
XT500				HT80			
XT600 ELECTRIC START				HT80			
XT600				HT80			G45
WR250	90-95	C14	L14 (60W)	HT80	P14		
YZ80	79-84	C61/C62		HTCDI			
YZ80	85 ON	C11/C51		HT80			
YZ85	2002	C38	L38 (50W)	HT80			
YZ125	77-86	C61/C62		HTCDI			
YZ125	88-89	C10/C54		HT80			
YZ125	90-91	C11/C51		HT80			
YZ125	92-95	C13/C55		HT80			
YZ125	96-99	C38	L38 (50W)	HT80			
YZ125	2000 ON	C39	L39 (45W)	HT80			
YZ250	76-84	C61/C62		HTCDI			
YZ250	85-87	C45	L45 (80W)	HT80			
YZ250	1988	C16/C56		HT80			

TYPE	YEAR	IGNITION COIL	LIGHTING COIL (POWER)	HT COIL	PULSE COIL	REGULATOR RECTIFIER	GENERATOR
YAMAHA							
YZ250	89-90	C10/C57		HT80			
YZ250	90-95	C14	L14 (60W)	HT80	P14		
YZ250	96-98	C38	L38 (50W)	HT80			
YZ250	99 ON	C39	L39 (45W)	HT80			
YZ400F	97-99	C38	L38 (50W)	HT80			
YZ426 F	00-02	C38	L38 (50W)	HT80			
YZ450 F	2003	C38	L38 (50W)	HT80			
YZ465	ALL	C30/C31	L31 (76W)	HT80	P31		

EXTRA

GAS-GAS							
EC200/280/300	97 ON	C46	L46 (60W)	HT55/HT80			
MC250	97 ON	C46	L46 (60W)	HT55/HT80			
XC200/250/300	97 ON	C46	L46 (60W)	HT55/HT80			
KTM							
125		C46	L46 (60W)	HT55/HT80			
250		C46	L46 (60W)	HT55/HT80			

SIZE AND ADDITIONAL INFORMATION ABOUT GENERATORS

GENERATOR	OUTER DIAMETER / INNER DIAMETER / THICKNESS THROUGH HOLE (MM)	GENERATOR	OUTER DIAMETER / INNER DIAMETER / THICKNESS THROUGH HOLE (MM)
G1	93/35/18	G52	107/42/24
G2	102/38/18	G53	107/42/24
G3	104,5/38/20	G54	107/42/24
G4	104,5/38/20	G61	REPLACEMENT FOR LUCAS 47205
G5	104,5/38/20	G62	124/95/19 (EXTERNAL STATOR)
G6	102/38/20	G72	107/42/16
G7	115/54/28	G73	103/42/16
G8	115/54/28	G74	103/42/20
G9	115/54/18	G75	103/42/24
G11	104,5/38/14	G76	103/42/24
G14	115/54/25	G78	SPECIAL FOR SUZUKI GSX400
G17	93/35/20	G83	103/42/15 (CHARGING AND IGNITION)
G18	92/35/12	G84	103/42/15 (CHARGING AND IGNITION)
G19	124/95/19 (EXTERNAL STATOR)	G87	103/42/16
G21	124/95/19 (EXTERNAL STATOR)	G88	SPECIAL FOR HONDA TRX/ATC 250
G25	SPECIAL FOR KAWASAKI KLX300	G90	KAWASAKI Z900/1000 (EXTERNAL STATOR)
G26	SPECIAL FOR CBR1100 INJECTIE	G91	SPECIAL FOR HONDA TRX300EX
G32	124/95/19 (EXTERNAL STATOR)	G92	GENERATOR AND ROTOR FOR DUCATI TWINS

GENERATOR	OUTER DIAMETER / INNER DIAMETER / THICKNESS THROUGH HOLE (MM)	GENERATOR	OUTER DIAMETER / INNER DIAMETER / THICKNESS THROUGH HOLE (MM)
G41	115/54/16 (CHARGING AND IGNITION)	G101	G1 BUT 30% MORE POWER
G42	SPECIAL FOR APRILIA 650 PEGASO	G102	G2 BUT 30% MORE POWER
G43	115/54/16 (CHARGING AND IGNITION)	G103	G3 BUT 30% MORE POWER
G44	115/54/18 (CHARGING AND IGNITION)	G104	G4 BUT 30% MORE POWER
G45	115/54/16 (CHARGING AND IGNITION)	G105	G5 BUT 30% MORE POWER
G46		G106	G6 BUT 30% MORE POWER
G47	115/54/16 (CHARGING AND IGNITION)	G107	G7 BUT 30% MORE POWER
G48	115/54/20 SPECIAL FOR TRX300/350	G108	G8 BUT 30% MORE POWER
G49	115/54/20 SPECIAL FOR FT500/RS250		

Voorwaarden & Bepalingen

Algemeen

Producten worden geleverd nadat het volledige bedrag is betaald. In de meeste gevallen worden producten onder rembours verstuurd. Offertes zijn 30 dagen geldig. Carmo electronics behoudt zich het recht een bestelling te weigeren na goedkeuring van de offerte. Bestellingen worden geaccepteerd via telefoon, fax en e-mail. Voor testen en reparatie geldt een behandelingstermijn van 3 dagen vanaf datum van aanlevering. Carmo electronics accepteert geen verantwoordelijkheid voor leveringen buiten de geschatte levertijd.

Garantie

- Reparatie: 3 maanden.
- Vervangende ontstekingsunit: 6 maanden.
- Dynamo/Spanningsregelaar: 3 maanden.
- AFI/ADI programmeerbaar: 6 maanden.

Voor alle producten geldt:

- Garantietermijn gaat in vanaf datum van levering.
- Alle optredende materiaal- en fabricagefouten worden kosteloos opgeheven.
- Verdere aanspraken op schadevergoeding, van welke aard dan ook, direct of indirect aan personen en/of materialen, zijn niet mogelijk.
- Raadpleeg eerst uw dealer. In de meeste gevallen kan uw dealer het probleem of defect verhelpen.
- Door een reparatie of vervanging van onderdelen binnen de garantietermijn, wordt de garantietermijn niet verlengd.
- Normale slijtage valt niet onder de garantie.

Uw recht op garantie geldt alléén indien:

- Een bewijs van aankoopdatum in de vorm van een aankoop bon getoond kan worden.
- Aan het product geen reparaties zijn verricht of veranderingen door derden zijn aangebracht, of niet-originele onderdelen zijn gemonteerd.
- Het product correct is gemonteerd.
- Er geen sprake is van overmacht van onze kant.
- De garantiebepalingen gelden in combinatie met onze leverings- en verkoopvoorwaarden.
- Alle kosten voor transport van te repareren units komt voor rekening van de koper. Slecht verpakte artikelen worden geweigerd.

Terms & Conditions

General

Products are despatched after the total amount of the invoice is received. Usually products are despatched by cash on delivery. Quotations are valid for thirty days. Carmo electronics reserves the right to refuse an order once accepted. Orders will be accepted by telephone, fax and e-mail. Testing and repairment will take place within 3 days from date of delivery. Carmo electronics accepts no responsibility for failure to deliver in estimated delivery times.

Guarantee

- Repairment: 3 months.
- Digital replacement ignition: 6 months.
- Generator/Regulator: 3 months.
- AFI/ADI programmable: 6 months.

All products apply:

- Guarantee form date of despatch.
- Carmo electronics guarantees all material and construction defects and will repair free of charge.
- Claims in respect of damage, of whatever nature, direct or indirect, to persons and/or materials are excluded.
- Always consult your Carmo electronics dealer in the first instance. Usually he will be able to solve the problem or repair the defect.
- If parts are repaired or replaced within the warranty period, this does not extend the warranty period.

This warranty applies only:

- If you can submit proof of the date of purchase. I.e. a receipt stating the date of purchase.
- If no repairs or alternations have been made to the product by third parties, nor other than the original parts have been fitted.
- If products are used in accordance with the instructions.
- If products are mounted correctly.
- If we cannot plead force majeure.
- The warranty provisions apply in combination with our terms of delivery and sale.
- All cost of transport of the product to be repaired is at buyers' expense. Badly packed articles are not accepted.



Carmo Electronics * Schootense Loop 4L * 5708 HX Helmond (The Netherlands)
tel: +31 (0)492 565220 * fax: +31 (0)492 565491 * email: info@carmo.nl
www.carmo.nl